

JB 120



J-UB
JACK-UP BARGE

Drilling
swift

CRANE CAPACITY 1.000 T
ACCOMODATION (max.) 204 POB

HELI DECK 19.5 M / 9.3 T
VARIABLE LOAD (max.) 1.650 T

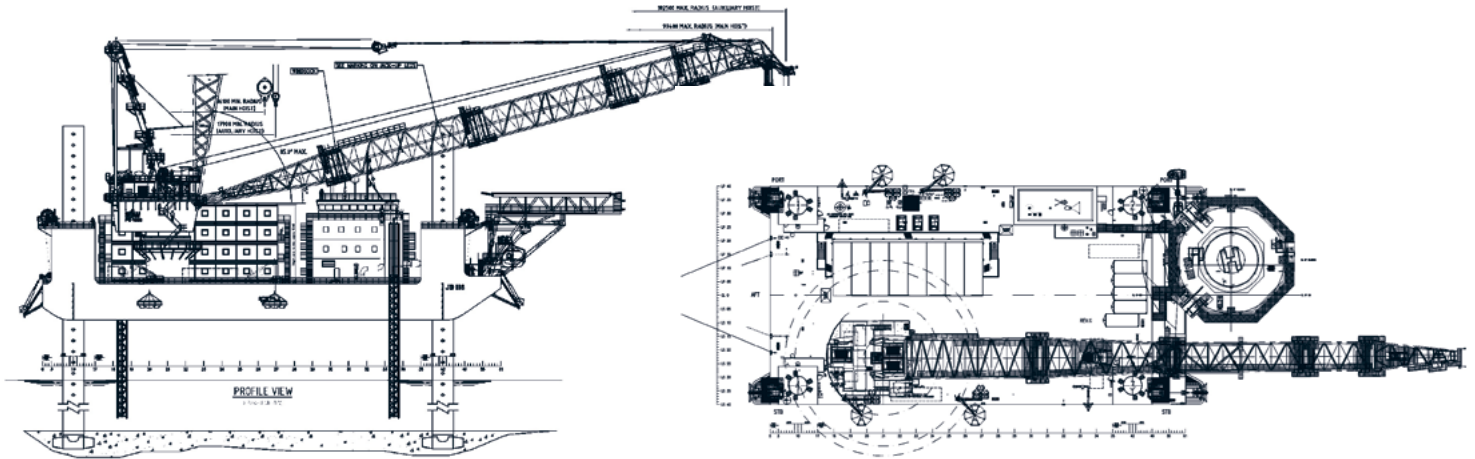
LEG LENGTH 90 M
DECK AREA (max.) 2.500 M²

JB 120

MSC SEA-3250

China Merchant Heavy Industries, China (2013)
 DNV 1A Self Elevating Offshore Support Unit
 Crane-Offshore DPS(2) R

Length	75.90 m
Breadth	40.00 m
Depth	6.00 m
Draft (max.)	3.5 m / 6.8 m incl. spudcans
Deck area	1.500 m² (up to 2.500 m)
Leg length	90.00 m (exchangeable)
Leg diameter	3.50 m
Spudcan	45 m² each (exchangeable)



JACKING SYSTEM

Make	MSC hydraulic positive engagement
Capacity	3,250 t pre-load per leg
Jacking speed up	max. 0.4 m / minute (synchronous)
Jacking speed down	max. 0.5 m / minute (synchronous)

MOORING SYSTEM

Winches	4 x 40 t line pull
Length	500 installed + 500 optional
Type	electric driven
Anchors	4 x Delta Flipper
Weight	6,5 t

TANKS CAPACITY

Fuel oil	430 m ³
Fresh water	320 m ³

CRANE

Make	Favelle Favco Cranes, Malaysia
Type	PC 1000 Offshore Pedestal crane
Boom length installed	98 m
Capacity installed	2x 250 t @ 40 m
Capacity optional max.	1000 t @ 22 m
Outreach	99.3 m (from crane center)

JACKING CONDITIONS

Wave height (max. Hs)	1.5 m
Wind speed (max.)	10 m / s

SURVIVAL CONDITIONS (MAX. 45 m WATER DEPTH)

Wave height (max. Hs)	8 m
Air gap	13.5 m
Wind speed (max.)	39.0 m / s

ACCOMMODATION

While elevated	64 POB upto 160 POB (max.)
During tow	25 POB
Cabins	74 (max.)

OTHER

Variable load	1650 t (max.)
Recommended BP	for tow 65-80 t

FUEL CONSUMPTION

Under tow/Stand-by	3 m ³ / day
Crane Lifting/jacking	5 m ³ / day

HELI DECK

Size	19.5 m diameter
Capacity	MTOL/ 9.3 t